



**CHRISTMAS OPEN HOUSE**  
Saturday, December 10  
Hamilton Grove  
1:00pm to 4:00pm ET

VOLUME 1, ISSUE 19

DECEMBER 2, 2016

FREE BI-WEEKLY EDITION

## TODAY'S PAPER

### Ark Encounter and Creation Museum Experience

Olive Chapel Church invites you to a special event on December 11, page 2

## COLUMNS

**Recipes, Etc: Cheerful Christmas Dessert Lasagna, page 3**

## AROUND TOWN

**Sounds of the Holidays at New Prairie, page 4**

## BUSINESS

**Everyone benefits when you make charitable gifts, page 5**

## NEWS

**Palm & Associates is now Marbach-Palm, page 10**

# HERE COMES SANTA CLAUS



*Photo by Bob Middlebrook*

**Community welcomes the holiday season with the 22nd annual Christmas in New Carlisle celebration, page 6-7.**



## HIGH SCHOOL BASKETBALL COUGARS VS. LA PORTE

**SATURDAY, DECEMBER 3**

**JUNIOR VARSITY TIPS OFF: 6:30PM ET/5:30PM CT**

**CIVIC AUDITORIUM • LA PORTE, INDIANA**

New Carlisle  
Gazette

newcarlislegazette.com

The *New Carlisle Gazette* is a bi-weekly publication serving not only New Carlisle, but also the surrounding communities of Rolling Prairie, Hudson Lake, and Mill Creek, Indiana. It is distributed free of charge in various public outlets throughout the area.

To submit a news tip/story, correction, letter to the editor (Viewpoint), or place advertising contact *The Gazette*:

New Carlisle Gazette  
500 South Bray Street  
New Carlisle, IN 46552

Phone: 574-876-2522  
Email: editor@newcarlislegazette.com

**Policies:**  
*The Gazette* is an independently owned and operated publication. The news is reported as accurately and objectively as possible. Any commentaries, letters, or columns present the views of the author and not necessarily those of *The Gazette*.

Viewpoint space is available to all readers, and the free expression of opinions is encouraged. All letters must be signed and contain contact information. Submission of letters does not guarantee publication, as *The Gazette* will not publish offensive, discriminatory, or libelous material.

Publication of advertisements does not imply an endorsement of the advertisers' goods or services.

Today's Writers

Editor/Publisher  
Koby Keck

Contributors  
Roanna Hooton  
Barbara Peterich  
Rick Romeo  
Mary Ann Swope

Ark Encounter and Creation Museum Experience

By Rick Romeo  
Pastor, Olive Chapel Church

We invite you to Olive Chapel Church on Sunday December 11, 2016.

Recently one of our members was able to visit Ark Encounter and Creation Museum, both located in northern Kentucky.

She said it was amazing to say the least. We would like to share her experience with you.

You ask what is Ark Encounter and Creation Museum.

“Ark Encounter features a full-size Noah’s Ark, built according to the dimensions given in the Bible. Spanning 510 feet long, 85 feet wide, and 51 feet high, this modern engineering marvel amazes visitors young and old. Ark Encounter is situated in the beautiful Williamstown, Kentucky, halfway between Cincinnati and Lexington on I-75. From

the moment you turn the corner and the towering Ark comes into view, to the friendly animals in the zoo, to the jaw-dropping exhibits inside the Ark, you’ll experience the pages of the Bible like never before”.

“The state-of-the-art Creation Museum allows you to venture through biblical history, stunning exhibits, botanical gardens, planetarium, petting zoo, zip line adventure course, and much more. This 75,000-square-foot facility has welcomed over 2.5 million guests since opening in Petersburg, Kentucky”.

We will start at 10:00 am EDT and view the videos “The Building of the Ark Encounter” and “Building the Exhibits of Ark Encounter”.

Plan to stay for lunch (you may bring a dish to share, but not necessary).

The adventure will continue at 12:30 with “The Noah Interview” while we eat.

After lunch, we will take a “Journey through the Creation Museum”. If time permits, we will view “Created Cosmos”.

If you are unable to attend in the morning, please join us at 12:15 for lunch.

Children are welcome. We have Veggie Tails and other movies for them and a chaperone, so you will be able to enjoy yourselves.

Please feel free to stay for any or all of the videos, and join us for lunch. Our member tells us this is truly an incredible journey. Please plan to join us.

Olive Chapel Church invites you to special Worship Services Sunday mornings at 10:00 am EDT throughout the month of December and Christmas Eve Service on December 24th, time to be announced in the next issue or you may call the church at 574-654-3615 and a special Christmas Morning Service at 10:00 am EDT.

2016 RATES AND UPCOMING DATES

Next Deadline Dec 9 • Next Issue Dec 16, 2016

Inside B&W Ads	
Full Page.....	\$420.00
Half Page.....	\$215.00
Quarter Page.....	\$120.00
Eighth Page.....	\$65.00
Sixteenth Page.....	\$35.00

Inside Color Ads	
Full Page.....	\$500.00
Half Page.....	\$260.00
Quarter Page.....	\$140.00
Eighth Page.....	\$80.00
Sixteenth Page.....	\$50.00

Back Page Color Ads	
Full Page.....	\$560.00
Half Page.....	\$305.00
Quarter Page.....	\$170.00

DEADLINE	ISSUE NUMBER	ISSUE
Dec 23	21	Dec 30

CHECK OUT THE FULL 2017  
PUBLICATION SCHEDULE ON PAGE 11.

Call: 574-876-2522 or Email:  
editor@newcarlislegazette.com  
to place advertising

Obituaries and Life Event Announcements: \$75



## Don & Wanda (Bisel) Tolmen Celebrate 60th Wedding Anniversary



Don and Wanda Tolmen were married in the Methodist Church in New Carlisle, IN on November 24, 1956. They have one daughter, Kim (Nate) Young, two granddaughters Jessica (Kenny) Pickett and Brianna Young. The Tolmens enjoy their family, travel, and spending time in Florida for three months every year.

**NEW CARLISLE  
OLIVE TOWNSHIP  
PUBLIC LIBRARY** **LEARN ENJOY CONNECT**  
408 S Bray Street • 574.654.3046 • [www.ncpl.lib.in.us](http://www.ncpl.lib.in.us)

### Hat & Mitten Tree

Accepting donations now through December 7  
All donations will be given to local people in need with the help  
of New Carlisle Food Pantry  
Sponsored by TAG (Teen Advisory Group)  
TAG meets every Thursday at 4 pm

### Funday Monday

Monday, December 12~3:00 pm  
Holiday Crafting  
All elementary age children are welcome!

### Yoga with Pat

Starting back up Saturday, December 10  
Mondays 6:00 pm  
Wednesdays 9:30 am & 6:00 pm  
Saturdays 9:30 am  
Donations accepted, bring yoga mat and water

## Recipes, Etc.

By Barbara Peterich  
For The Gazette

### CHEERFUL CHRISTMAS DESSERT LASAGNA

This is a four-layered, spectacular, and very “Christ-masy” colored dessert.

#### Layer #1 (Shortbread Cookie Layer):

$\frac{3}{4}$  cup unsalted butter, softened  
 $\frac{1}{2}$  cup powdered sugar  
1  $\frac{1}{2}$  cups all-purpose flour  
1 T. cocoa powder  
 $\frac{1}{4}$  tsp salt  
Red food coloring

#### Layer #2 (Peppermint Cheese-cake layer):

8 oz. cream cheese, softened  
1 cup powdered sugar  
1  $\frac{1}{2}$  cups Cool Whip  
1 tsp peppermint extract

#### Layer #3 (Pudding Layer):

3 cups milk  
Green food coloring

#### Layer #4 (topping):

1  $\frac{1}{2}$  cups Cool Whip  
Garnish Layer - optional  
2 cups of mini marshmallows  
Red and green sprinkles

#### Preparation:

Preheat oven to 350 degrees; lightly butter 9 x 13 inch baking dish. Set aside.

Layer #1: In a small bowl, stir to-

gether flour, salt and cocoa powder.

In large bowl, beat butter and sugar until smooth. Add 1 T. red food coloring and mix well, with mixer on low speed, add gradually add above flour mixture; mix until combined.

Press above mixture onto baking dish and bake for 18-20 minutes; remove from oven and cool.

Layer #2: Beat softened cream cheese and powdered sugar until smooth. Add Cool

Whip and peppermint extract and mix to combine. Spread over the cooled shortbread layer. Place in freezer to firm while preparing the pudding.

Layer # 3: Whisk together 2 (3.9 oz) pudding boxes of white chocolate pudding mixes with 3 cups milk. Add a few drops at a time of green food coloring and whisk until smooth. Spread over cream cheese layer. Place in freezer for about 5 minutes.

Layer #4: Spread 1  $\frac{1}{2}$  cups of Cool Whip over pudding layer; top with the garnishes if you wish. Place in refrigerator for about 3 - 4 hours.

*Etc.* — This whimsical layered dessert may take you a while to prepare, but I am sure it will be a hit at your Christmas gatherings!

You probably can prepare this dessert and place in your freezer until ready to serve.

# Sounds of the Holidays at New Prairie

## Photo Story

By Roanna Hooton

Beautiful holiday sounds will be coming from New Prairie this December as the New Prairie High School and Middle School bands and choirs perform their annual holiday concerts.

Join us during the below dates and times. It is a chance to sit back relax and support the local arts.

All concerts will be held in the New Prairie Auditorium.

**Admission: Adults - \$5.00**

**Students - \$3.00**

### New Prairie Middle School Choir

Directed by: Lori Kienitz

Wednesday, December 7, 2016

6:00p.m. CST

Featuring: 6th, 7th and 8th grade choirs

Songs will include: Jingle Bell Rock, Grinch! A Christmas Choral Medley (From Dr. Seuss' How the Grinch Stole Christmas), Carol of the Bells and 2 combined numbers

### New Prairie Middle School Band

Directed by: Daniel Weinberg

Tuesday, December 13

5:30 pm CST

Featuring the 6th, 7th and 8th grade bands

### New Prairie High School Choir

Directed by: James Bennett

Friday, December 9 or Saturday, December 10

6:00pm CST

Featuring: Beginning Women's Choir, Sapphire, Sing Sensation, Innovation

Some songs that will be performed:

Baby It's Cold Outside, All I Want for Christmas is You, Hot Chocolate (from the Polar Express), Silver Bells, I'll Be Home for Christmas.

### New Prairie High School Band

Directed by: Patrick Teykl

Wednesday, December 14

6:00 pm CST

Featuring the NPHS Jazz Band, Holiday Concert Band and a few feature act performances.





**ABACUS**  
Home Inspections  
& Construction

**Brian Kelly • Owner**  
Licensed, Bonded & Insured  
**219-778-9100**

Brian@AbacusHomeInspections.com

- Fences, decks, concrete & bricklaying
- Pole barns & garages
- Kitchen & bath remodeling
- Windows, doors, & flooring
- Painting

**DEBORAH SULLIVAN BROWN**  
*Attorney & Counselor at Law*

**Estate Planning**  
**Revocable Trusts & Wills**  
**Probate Estates**

❖

**BARBARA T. PETERICH**  
*Paralegal*

**574-654-7647 or 574-656-8093**

*Professional experience with  
small town courtesy and values.*

**Dr. Jeffrey A. Huyvaert**

132 E Michigan St  
P.O. Box 853  
New Carlisle

**574-654-8811**

*Office Hours by  
Appointment*

**NEMETH, FEENEY, MASTERS  
& CAMPITI, P.C.**  
ATTORNEYS AT LAW

109 EAST MICHIGAN STREET  
P.O. BOX 259, NEW CARLISLE, INDIANA 46552  
TELEPHONE: (574) 654-3722

*Serving the NEW CARLISLE AREA SINCE 1949*

*Wills and Trusts • Estate Planning • Powers of Attorney  
Guardianship • Adoptions • Real Estate • Purchase and  
Sales • Leases • Zoning • Condemnation • Tax Sales  
Property Tax Appeals • Farm Sales and Leasing  
Corporations • LLCs • DBAs • Other Business Entities*

**NEW CARLISLE OFFICE HOURS ON WEDNESDAY  
AND OTHER TIMES BY APPOINTMENT**  
House calls, hospital and nursing home visits as needed



# Everyone Benefits When You Make Charitable Gifts

Provided By  
Edward Jones

Now that we are in the heart of the holiday season, you may be thinking about ways you can put your money where your heart is.

Specifically, you might be pondering which groups you should support with charitable gifts.

And as long as you choose groups that meet the right criteria, your generosity can also be rewarding to you, in the form of tax benefits.

To begin with, you'll want to make sure you are giving to a reputable charity.

That means you'll need to ask some questions.

How does a group measure its effectiveness? Is it devoting as much of its contributions as possible to the actual work of the organization, or is it spending too much money on administrative costs?

Generally, a worthwhile charity should spend at least 75% of its income on programs.

You may be able to find this type of information on a charitable

group's annual report and its website.

You can also go to the website of one of the agencies that evaluates charitable groups.

On these sites, you can get a lot of information dealing with a charity's effectiveness, income, spending and other topics.

After you've identified a charity, or charities, you can decide how much you want to give and how you want to give it.

If the charity has 501(c)(3) status (named after the section of the Internal Revenue Code that governs such groups), your gift can offer you a tax deduction.

So, for example, if you are in the 25% tax bracket, and you give \$1,000 to a qualified charity, you can subtract the \$1,000 from your adjusted gross income, which will result in tax savings of \$250.

Upon making your gift, make sure you get a receipt that lists the name of the organization and the date and amount of your contribution. (Your maximum deduction will be limited to a percentage of your adjusted gross income.)

You can do more than simply write a check, however. If you have stocks that have grown significantly in value, you may want to donate them to a charitable group.

You will be allowed a charitable deduction for the full fair market value of the gift on the date of the transfer, even if your original cost was only a fraction of today's value. Furthermore, you will avoid the capital gains taxes you'd have to pay if you sold the stock, provided you've held the stock for at least a year.

If you do contribute appreciated stocks, you will want to be cognizant of the effect of your donation on your portfolio.

If you were to give a sizable amount of growth-oriented stocks, would it affect your overall growth potential?

Conversely, if you are primarily giving away relatively conservative, income-producing stocks, would it end up moving your portfolio in a riskier direction?

When donating stocks, if at all possible try to do so in a way that does not harm your portfolio's balance.

In any case, whether you give cash or appreciated assets, you'll need to make your gift by Dec. 31 if you're going to deduct it on your 2016 taxes.

So be as generous as you can afford, think about the effect of your gift on your own financial situation – and be prepared to act soon.

*This article was written by Edward Jones for use by your local Edward Jones Financial Advisor.*

## THE SEASON OF GIVING

This past Tuesday, November 29, was the fifth annual #GivingTuesday.

#GivingTuesday is a global day of giving fueled by the power of social media and collaboration. Celebrated on the Tuesday following Thanksgiving (in the U.S.) and the widely recognized shopping events Black Friday and Cyber Monday, #GivingTuesday kicks off the charitable season, when many focus on their holiday and end-of-year giving.

It is estimated that over 700,000 people donated more than \$116 million on #GivingTuesday in 2015.

**Want to eSubscribe?**

**DIGITAL EDITION SENT TO YOUR INBOX**

**SIGN UP FOR FREE  
ONLINE AT:**

New Carlisle  
**Gazette.com**



**MICHIANA INSURANCE**

109 E Michigan Street  
New Carlisle

**574-988-0116**

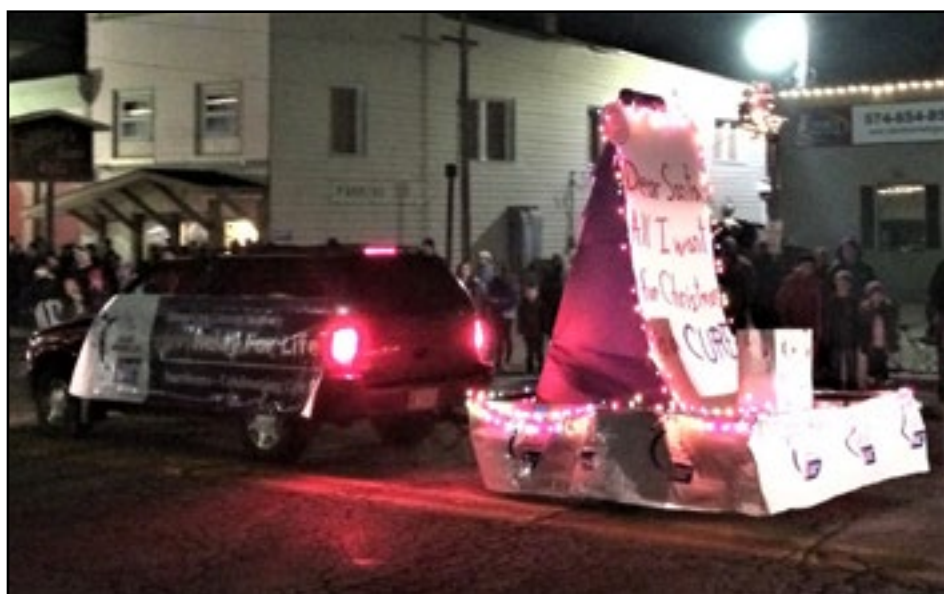
**www.michianainsurance.com**

**MICHIGAN CITY – NEW CARLISLE – SOUTH BEND**



*LEFT: Known as "Grandma and Grandpa Built a Float," the magnificent Winter Wonderland float caught the attention of many parade spectators.*

*The float was created by Lenard and Linda Kazmirski. The Kazmirski's began building floats about seven years ago, and visit seven Christmas parades per year.*



*The La Porte Relay for Life has only one item on their Christmas list this year: a cure for cancer.*



## New Carlisle Welcomes Holiday Season

The Sunday after Thanksgiving marks the official beginning of the Christmas season in New Carlisle.

On November 27, the 22nd annual Christmas in New Carlisle celebration was held downtown.

The event, which has been organized by Discover New Carlisle for the past three years, begins with an arts and crafts show at the Fire Station.

Kathy Aurenz coordinated the craft show, which

hosted 35 vendors this year.

The New Carlisle Lions Club provided chili and hot dogs, while volunteers from the community donated cookies for the bake sale.

Kids were able to meet Santa Claus at the craft show, played by Rodney Mayfield.

After dark, the annual lighted parade, with floats from various local businesses and organizations, began at Memorial Park

*LEFT: The New Carlisle Fire Station was filled with an assortment of beautiful items from local craft vendors. (Photo by Kathy Aurenz)*

*RIGHT: The mood was so cheerful downtown that even the Grinch was smiling as he made his way down the parade route.*







and concluded in downtown.

The parade is directed by Jessica Varga. This year's parade featured 34 entries, nearly double of the 2015 turnout.

The Methodist Church pushed shopping carts along the route to collect items for the food pantry.

Of course, the grand finale of the parade featured Santa Claus escorted by the New Carlisle Fire Department. As St. Nick passed by the Town Hall, the beautifully decorated town tree was lit up for the season.

After the parade, cookies and hot cocoa were served to the community at the fire station. This was made possible through donations by Wells

Fargo, Hamilton Grove, Miller's Merry Manor, and 1st Source Bank.

New Carlisle will certainly be well decorated for the season. In addition to the lights on the businesses and at the park, the lampposts along Michigan Street are outfitted with wreaths and yarn "sweaters."

The wreaths were handled by Dana Groves and Marcy Kauffman, while the yarn-bombing was done by the ladies from Yarn and More.

Proceeds from the craft show are used to keep the town illuminated during the holidays. The town crew, police department, and fire department all helped make the celebration possible.



*LEFT: M&M Tax Services provided one of the highlights of the parade with their float and M&M train.*

*RIGHT: "New" Beautiful - This year marks the first Christmas season for the new town tree, which was planted in April. The evergreen was illuminated as Santa Claus passed the Town Hall to conclude the parade.*



# Community Calendar: Dec 2 – Dec 24

## December 2

### Playdate with Baby

New Carlisle Public Library  
9:30am to 10:30am (ET)  
Join other parents and children for play time.

## December 3

### Senior BINGO

New Carlisle Public Library  
2:30pm to 4:00pm (ET)  
Register online by calling the library or online at [www.ncpl.lib.in.us](http://www.ncpl.lib.in.us). Sponsored by TAG (Teen Advisory Group).

## December 3

### Dinner with Santa Claus

New Carlisle United Methodist Church  
6:00pm (ET)  
Santa and Mrs. Claus will be visiting the church. Dinner will be served. Everyone welcome to come to the dinner and meet Santa.

## December 7

### Frank L. Keszei Funeral Home Breakfast & Learn

Millers Home Cafe  
8:30am (ET)  
Join us to learn about the critical benefits of advance funeral planning, followed by an informal question and answer session. Seating is limited, please RSVP by December 2 to Missy Hubert, Family Services Director.

## December 7

### Story Time

New Carlisle Public Library  
10:00am (ET)  
Stories and more for preschool aged children.

## December 8

### TOPS Meeting

New Carlisle Public Library  
9:00am (ET)  
Take off Pounds Sensibly

## December 8

### Story Time

New Carlisle Public Library  
10:00am (ET)

Stories and more for preschool aged children.

## December 8

### Community Food Pantry

Rolling Prairie UMC  
8:00am to 12:00pm (CT)  
Free Food for those in need.

## December 8

### TAG (Teen Advisory Group)

New Carlisle Public Library  
4:00pm to 5:30pm (ET)  
Teens grades 6 through 12.

## December 9

### Preschool Playdate

New Carlisle Public Library  
9:30am to 11:30am (ET)  
Join other parents and children for play time.

## December 10

### Yoga with Pat

New Carlisle Public Library  
9:30am (ET)  
Donations accepted, bring yoga mat and water.

## December 10

### Christmas Open House

Hamilton Grove  
1:00pm to 4:00pm (ET)  
Please join us for a Saturday afternoon of shopping from local Crafters, Music, Refreshments, Kids Activities, and Santa.

## December 11

### Ark Encounter and Creation

Museum Videos  
Olive Chapel Church  
10:00am (ET)  
We will have a dinner at Noon (ET). If you'd like to bring a dish to share, you may, but it's not necessary. We will be showing more videos during dinner.

## December 12

### Funday Monday

New Carlisle Public Library  
3:00pm (ET)  
Holiday crafting. All elementary age

children are welcome.

## December 12

### Yoga with Pat

New Carlisle Public Library  
6:00pm (ET)  
Donations accepted, bring yoga mat and water.

## December 14

### Story Time

New Carlisle Public Library  
10:00am (ET)  
Stories and more for preschool aged children.

## December 14

### Yoga with Pat

New Carlisle Public Library  
9:30am & 6:00pm (ET)  
Donations accepted, bring yoga mat and water.

## December 15

### TOPS Meeting

New Carlisle Public Library  
9:00am (ET)  
Take off Pounds Sensibly

## December 15

### Story Time

New Carlisle Public Library  
10:00am (ET)  
Stories and more for preschool aged children.

## December 15

### Community Food Pantry

Rolling Prairie UMC  
8:00am to 12:00pm (CT)  
Free Food for those in need.

## December 15

### TAG (Teen Advisory Group)

New Carlisle Public Library  
4:00pm to 5:30pm (ET)  
Teens grades 6 through 12.

## December 16

### Fish Fry

Terre Coupee Lodge #204  
54214 Timothy Road, New Carlisle  
5:00pm to 8:00pm (ET)

Adult: \$8.00/Children: \$4.00/Active ambulance, fire, and police: \$7.00.

## December 17

### Yoga with Pat

New Carlisle Public Library  
9:30am (ET)  
Donations accepted, bring yoga mat and water.

## December 19

### Yoga with Pat

New Carlisle Public Library  
6:00pm (ET)  
Donations accepted, bring yoga mat and water.

## December 21

### Yoga with Pat

New Carlisle Public Library  
9:30am & 6:00pm (ET)  
Donations accepted, bring yoga mat and water.

## December 22

### TOPS Meeting

New Carlisle Public Library  
9:00am (ET)  
Take off Pounds Sensibly

## December 22

### Community Food Pantry

Rolling Prairie UMC  
8:00am to 12:00pm (CT)  
Free Food for those in need.

## December 24

### Candlelight Christmas Eve Service

Hudson Lake Mennonite Church  
6:00pm (ET)

## HAVE AN EVENT?

To submit an event for the community calendar, fill out the form online at [newcarlislegazette.com](http://newcarlislegazette.com) or email [editor@newcarlislegazette.com](mailto:editor@newcarlislegazette.com) with the details.



## New Troy Indoor Flea Market

Let's get Christmas shopping! The New Troy Community Center is going to be chock-full of treasures for two Indoor Flea Markets on Saturday, December 10 and Saturday, December 17, from 9:00 to 3:00 both days.

Antiques, tools, crafts, books, memorabilia, housewares, furniture and lots of yummy, locally made or grown goodies and more will be available — something for everyone! Bring the whole family for a day of fun including a hot, tasty lunch. Admission is free.

The Flea Market season will

continue on the second and third Saturdays of every month through March. The New Troy Community Center is located at 13372 California Rd., New Troy, Michigan. A map is available on the Facebook page NewTroyFleaMarket.

Vendors spaces are \$13 each, which includes a table and chair. For more information, contact Donald at 773-803-9773.

Proceeds from space rentals benefit the Community Center, an all-volunteer facility run by the non-profit organization, Friends of New Troy.

## Reserve your Private Innertubing Party today with St. Joseph County Parks

The St. Joseph County Parks has begun accepting reservations for Private Innertubing Parties for January and February at Ferrettie/Baugo Creek County Park and St. Patrick's County Park.

Parties of 1-99 people may reserve either park for \$165 for two hours. Parties of 100-300 may reserve Ferrettie/Baugo Creek County Park for \$265 for 3 hours.

All innertubing parties include innertubes, a warming room, fire, tables and chairs, and staff supervision on the hills. Sleds and toboggans are not permitted. Not recommended for children three years of age or younger.

Private innertubing parties are great for birthdays, scouts, church groups, clubs, businesses and all other groups seeking some winter time fun in the snow. Dates fill up quickly, so call; 574/654-3155 and reserve your private party today!

Ferrettie/Baugo Creek County Park is located on Ash Road/West County Line Road, just north of Lincoln Way/US 933 in Osceola, Indiana.

St. Patrick's County Park is located on Laurel Rd. north of Auten Rd. in South Bend, Indiana.

For more information please call the St. Joseph County Parks at 574/277-4828.

*Residents, families, and the community are invited to a*

# Christmas Open House

**Saturday, December 10**  
**1:00pm to 4:00pm**  
**South Bend Time**

*Please join us for a Saturday afternoon of shopping from local Crafters, Music, Refreshments, Kids Activities, and Santa.*

**HAMILTON GROVE**  
**31869 CHICAGO TRAIL**  
**NEW CARLISLE, IN 46552**

# PALM & ASSOCIATES IS NOW MARBACH-PALM, INC.

Marbach, Brady & Weaver, Inc. is pleased to announce the acquisition of Palm & Associates following the recent retirement of Robert D. Palm. The company is now known as Marbach-Palm, Inc.

Based in New Carlisle, Indiana, Palm and Associates has built and maintained a reputation of trust and professionalism in the civil engineering and land surveying field since 1976.

Christian F. Marbach, President and Owner of Marbach-Palm, Inc., is pleased to be helping Palm and Associates successfully transition into a new relationship with its now sister company, Marbach, Brady & Weaver, Inc., located in Elkhart, Indiana.

Marbach has made the decision to merge and grow current operations while expanding the firm's footprint, strengthening recognition, and streamlining the operations of this renowned firm.

About Marbach, Brady & Weaver, Inc.: Our past is rooted in two companies. Weaver and Associ-

ates was founded by former Elkhart City Engineer Harmon Weaver, and subsequently passed on to his son, Elkhart City Engineer, and former Mayor of Elkhart, John Weaver.

Brady Land Surveying was founded in 1958 by Byron M. Brady.

The firm served Elkhart and the larger community for thirty years, providing, among other services, large scale utility and control surveys relying on highly accurate data.

In 1998, Weaver & Associates and Marbach & Brady Land Surveying combined to form Marbach, Brady & Weaver, Inc.

The company has an inventory of 40,000 drawings and documents of land surveying and engineering projects from Elkhart and surrounding areas.

Marbach, Brady & Weaver, Inc. has maintained a tradition of trust over their years of operation. Marbach-Palm, Inc. looks forward to providing the same excellent service and satisfaction to New Carlisle and the surrounding areas for future years to come.

## COUGAR SPORTS SCHEDULE December 2 - December 15

### BOYS BASKETBALL

Sat. 12/3	Junior Varsity @ LaPorte	5:30pm
Sat. 12/3	Varsity @ LaPorte	7:00pm
Mon. 12/5	Freshmen vs. South Central	5:30pm
Tue. 12/6	Junior Varsity vs. Mishawaka Marian	5:00pm
Tue. 12/6	Varsity vs. Mishawaka Marian	6:30pm
Wed. 12/7	Freshmen @ Elkhart Central	5:30pm
Fri. 12/9	Junior Varsity @ Jimtown	5:00pm
Fri. 12/9	Varsity @ Jimtown	6:30pm
Sat. 12/10	Freshmen vs. Michigan City	10:00am
Mon. 12/12	Freshmen vs. Mishawaka Marian	5:30pm
Tue. 12/13	Junior Varsity @ Oregon-Davis	5:30pm
Tue. 12/13	Varsity @ Oregon-Davis	7:00pm
Wed. 12/14	Freshmen @ Jimtown	5:00pm
Thu. 12/15	Junior Varsity @ South Bend Clay	5:00pm
Thu. 12/15	Varsity @ South Bend Clay	6:30pm

### GIRLS BASKETBALL

Sat. 12/3	Junior Varsity @ Elkhart Central	9:00am
Sat. 12/3	Varsity @ Elkhart Central	10:30am
Tue. 12/6	Varsity vs. Mishawaka Marian	5:00pm
Tue. 12/6	Junior Varsity vs. Mishawaka Marian	6:30pm
Thu. 12/8	Junior Varsity @ Jimtown	5:00pm
Thu. 12/8	Varsity @ Jimtown	6:30pm
Sat. 12/10	Junior Varsity @ Argos	5:30pm
Sat. 12/10	Varsity @ Argos	7:00pm
Thu. 12/15	Junior Varsity vs. Michigan City	6:00pm
Thu. 12/15	Varsity vs. Michigan City	7:30pm

### SWIMMING & DIVING

Sat. 12/3	vs. Michigan City	9:00am
Thu. 12/8	vs. South Bend Adams	5:00pm
Tue. 12/13	@ South Bend Washington	5:00pm
Thu. 12/15	vs. Concord/Penn @ Concord	5:00pm

### WRESTLING

Sat. 12/3	Varsity @ Jimtown	8:00am
Sat. 12/3	Junior Varsity @ Concord	8:00am
Wed. 12/7	@ Culver Military Academy	5:30pm
Sat. 12/10	Varsity @ South Bend Washington	6:30am
Sat. 12/10	Junior Varsity @ Plymouth	7:00am

#### ALL TIMES LISTED ARE CENTRAL TIME (SCHOOL TIME)

Cougar Sports Schedule is accurate as of press time on Tuesday, November 29. All event times and locations are subject to change. For the most up-to-date information, visit the New Prairie Athletics page on Schedule Star at <http://schedules.schedulestar.com/New-Prairie-High-School-New-Carlisle-IN/>

MOUGIN ROOFING, LLC

HONESTY.

PRIDE.

ACCOUNTABILITY.

New Carlisle, Indiana



# New Carlisle Bazette

## 2017 PUBLICATION SCHEDULE

*(All Dates Listed are Fridays)*

DEADLINE DATE	ISSUE NUMBER	PUBLICATION DATE
January 6	Vol. 1, Issue 22	January 13
January 20	Vol. 1, Issue 23	January 27
February 3	Vol. 1, Issue 24	February 10
February 17	Vol. 1, Issue 25	February 24
March 3	Vol. 1, Issue 26	March 10
March 17	Vol. 2, Issue 1	March 24
March 31	Vol. 2, Issue 2	April 7
April 14	Vol. 2, Issue 3	April 21
April 28	Vol. 2, Issue 4	May 5
May 12	Vol. 2, Issue 5	May 19
May 26	Vol. 2, Issue 6	June 2
June 9	Vol. 2, Issue 7	June 16
June 23	Vol. 2, Issue 8	June 30
July 7	Vol. 2, Issue 9	July 14
<b>July 21</b>	<b>HOMETOWN DAYS</b>	<b>July 28</b>
August 4	Vol. 2, Issue 11	August 11
August 18	Vol. 2, Issue 12	August 25
September 1	Vol. 2, Issue 13	September 8
September 15	Vol. 2, Issue 14	September 22
September 29	Vol. 2, Issue 15	October 6
October 13	Vol. 2, Issue 16	October 20
October 27	Vol. 2, Issue 17	November 3
November 10	Vol. 2, Issue 18	November 17
November 24	Vol. 2, Issue 19	December 1
December 8	Vol. 2, Issue 20	December 15
December 22	Vol. 2, Issue 21	December 29

*Advertising rates the same as 2016 (page 2). Discounts for multiple issue commitments and non-profits available.*



# New Carlisle Bazette

It's Beginning to Look a Lot Like  
Christmas!